

CRYSTAL INNOVATIONS AW 2023



PRECIOSA



PRECIOSA



CONTENTS



25
NEW COLOR
MESMERA



4
TREND FORECAST
ARTFUL EMPATH



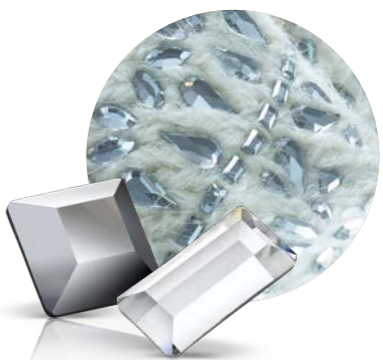
35
NEW COATING
GLITTER





10
TREND FORECAST
MINDFUL RESET


43
RANGE EXTENSIONS
COLORS & COATINGS


16
TREND FORECAST
PHYGITAL FANCY


55
IMPROVED QUALITY
NOW IN MAXIMA



TREND FORECAST **ARTFUL EMPATH**

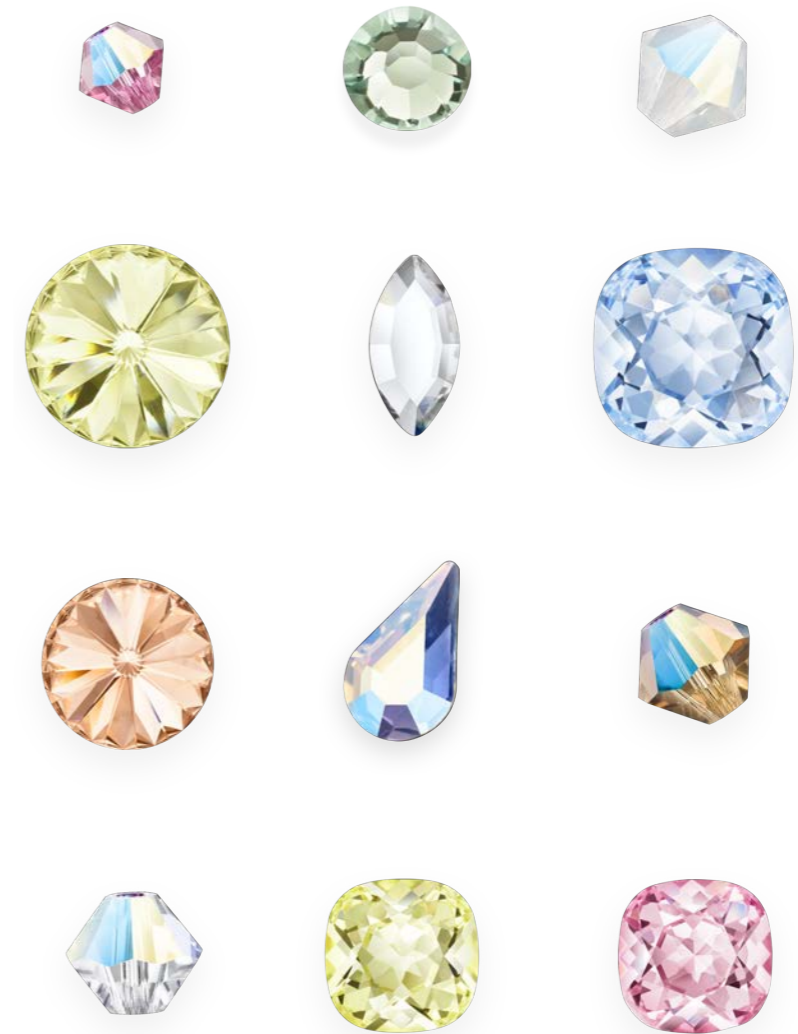
Nurturing and emotive, this trend is fueled by the chaos and movement of the past two years, and focuses on home as a concept as well as a place.





COLOR PALETTE

This is a feelgood but grounded palette, balancing energetic, fruity brights, like Light Peach and Jonquil, with soothing pastels and mid-tones such as White Opal and Light Sapphire.



Rondelle Bead Rose Glitter | **Chaton Rose MAXIMA** Mesmera | **Rondelle Bead** White Opal Glitter

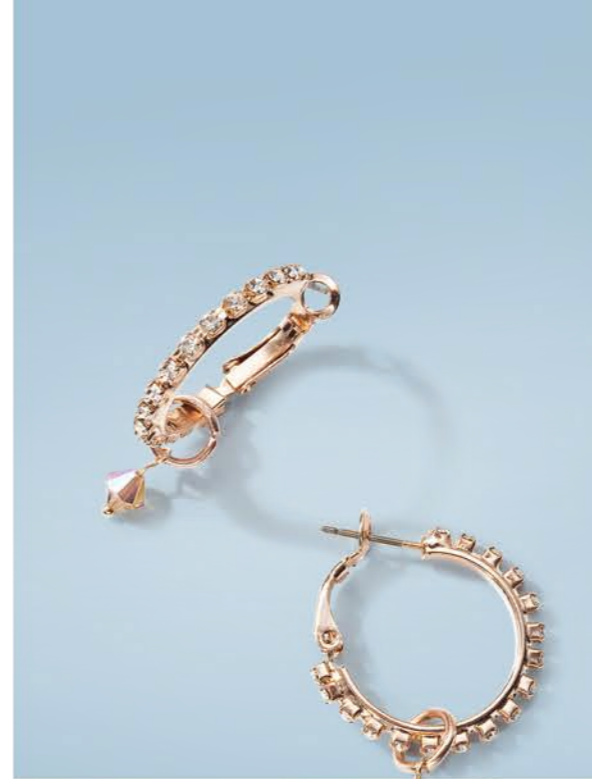
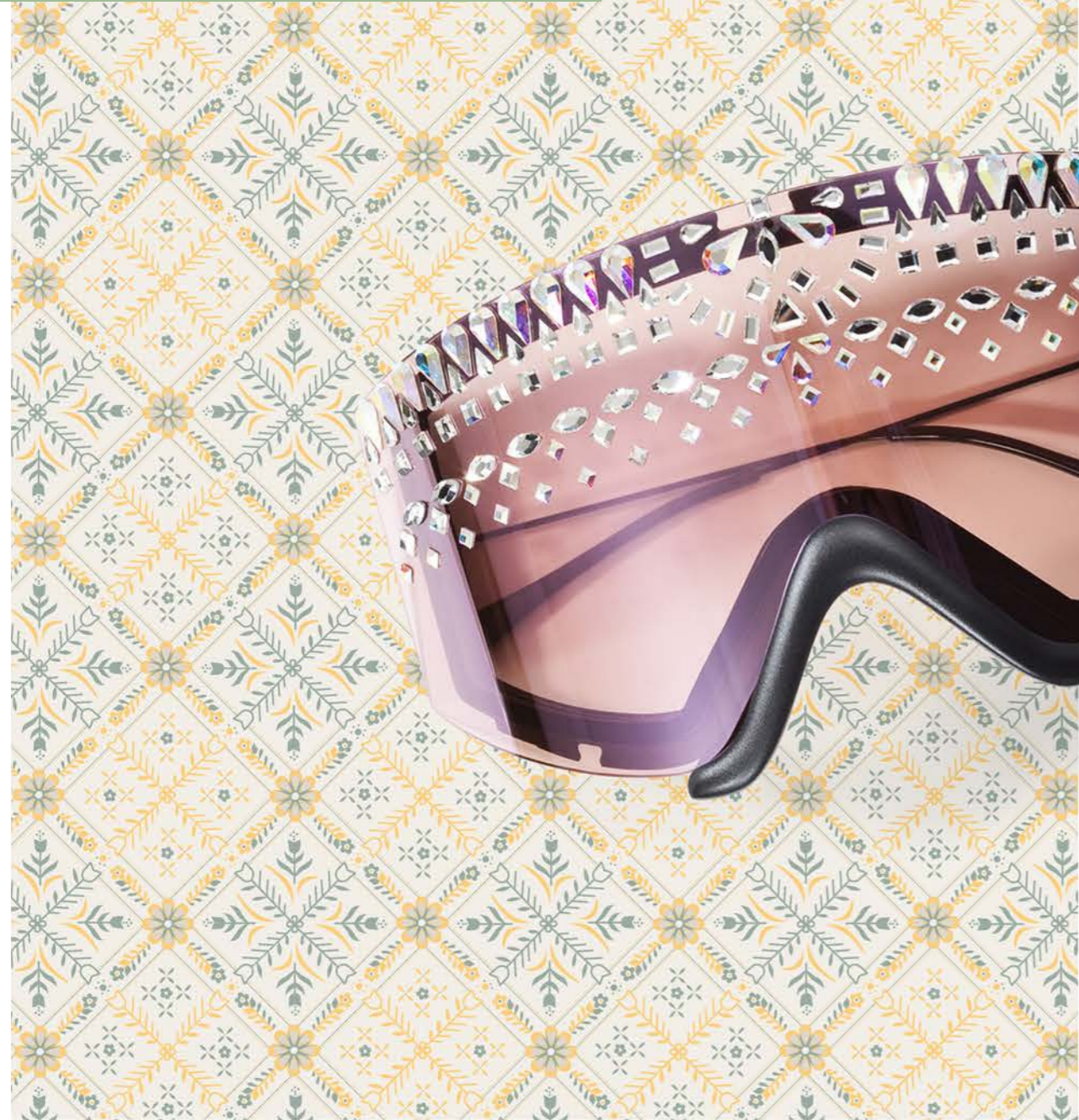
Rivoli MAXIMA Jonquil | **Navette MAXIMA FB** Crystal | **Cushion Square MAXIMA** Light Sapphire

Rivoli MAXIMA Light Peach | **Pear MAXIMA FB** Crystal AB | **Rondelle Bead** Light Colorado Topaz Glitter

Rondelle Bead Crystal Glitter | **Cushion Square MAXIMA** Jonquil | **Cushion Square MAXIMA** Light Rose



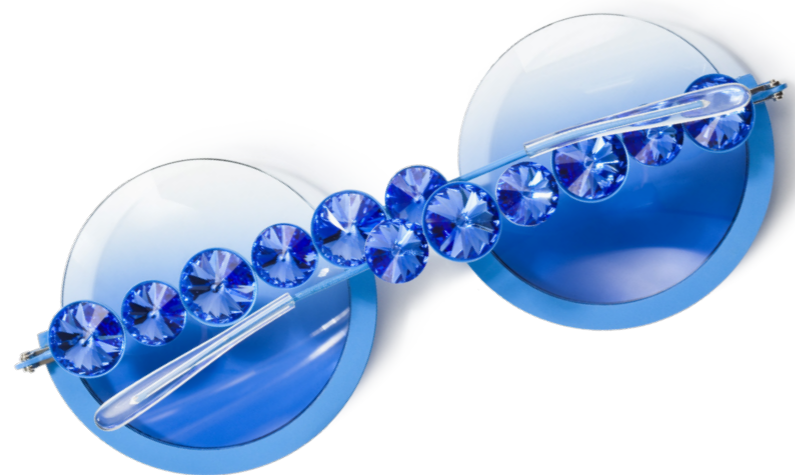
Try elevating cozy knitwear or functional accessories with mood-boosting crystal embellishment that adds an unexpected twist to classic styles.





TREND FORECAST MINDFUL RESET

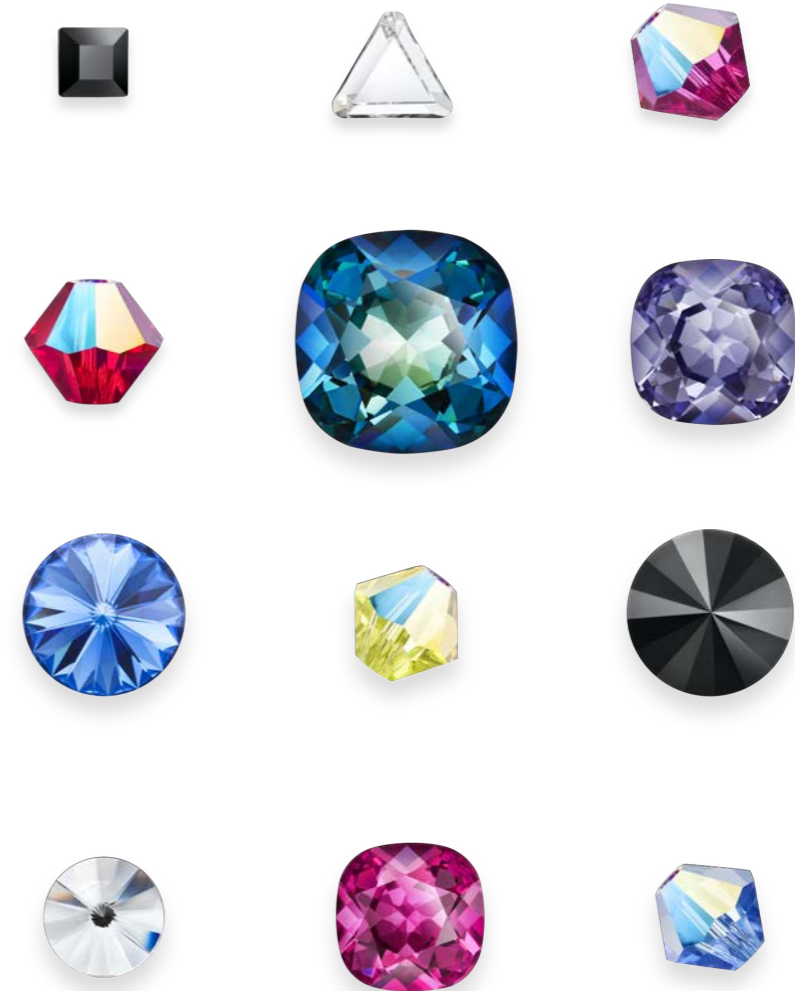
This trend champions design ingenuity as a force for positive change and will see more brands "democra-sizing" with personalized products and services that reduce waste.





COLOR PALETTE

This palette combines rich darks and jewel tones such as Fuchsia and Tanzanite, which act as fashion and core shades, with mid-tones and artificial brights, like Sapphire and Bermuda Blue, for unexpected accents.



Square MAXIMA FB Jet | Triangle MAXIMA FB Crystal | Rondelle Bead Fuchsia Glitter

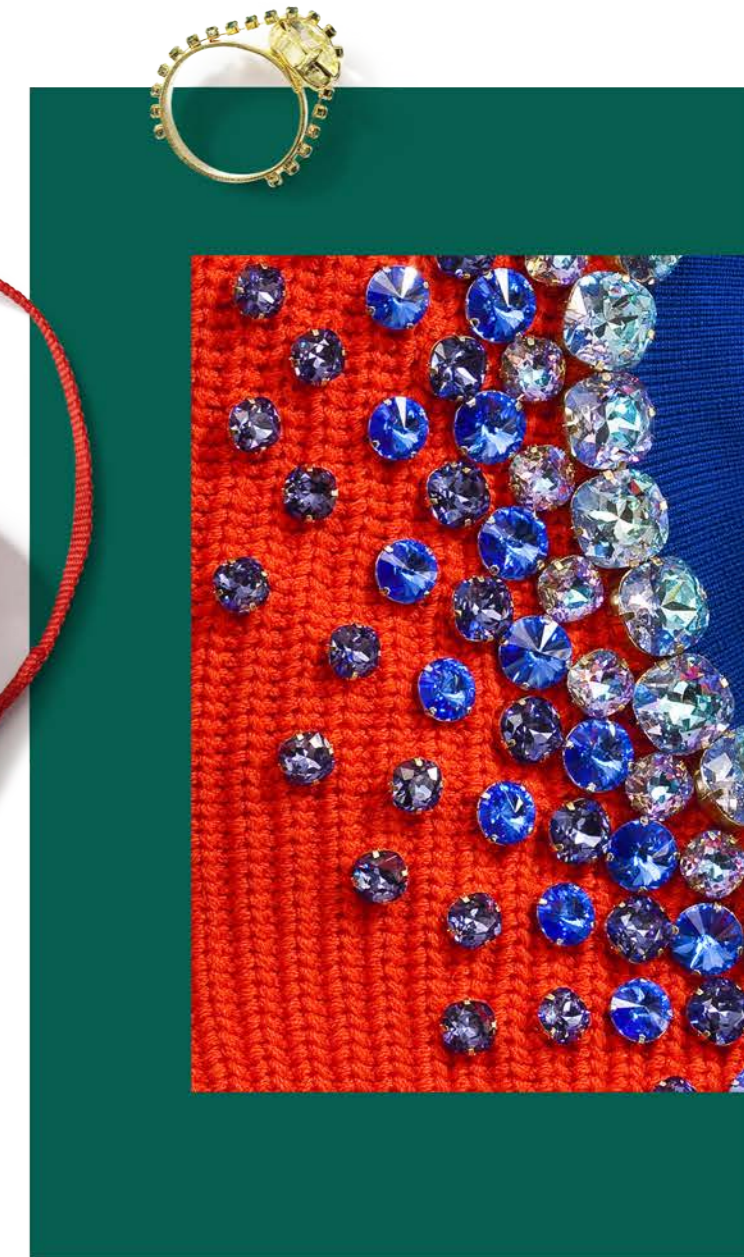
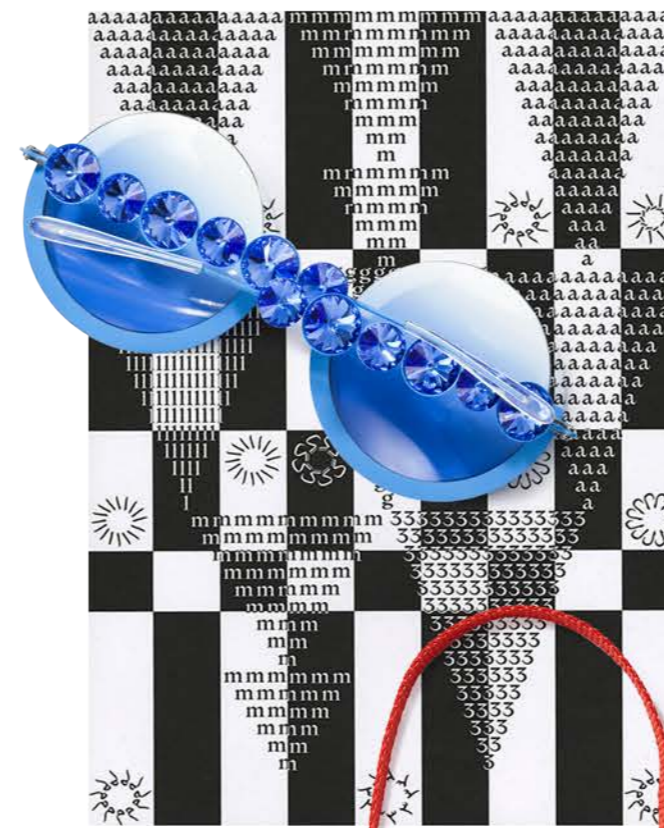
Rondelle Bead Light Siam Glitter | Cushion Square MAXIMA Crystal Bermuda Blue | Cushion Square MAXIMA Tanzanite

Rivoli MAXIMA Sapphire | Rondelle Bead Citrine Glitter | Rivoli MAXIMA Jet

Rivoli MAXIMA FB Crystal | Cushion Square MAXIMA Fuchsia | Rondelle Bead Sapphire Glitter

Intentional and intelligent use of crystal embellishment is the key to creating special, one-of-a-kind pieces with potential to become cherished family heirlooms.

Call
Sea
EDGE
HUE





TREND FORECAST PHYGITAL FANCY

Otherworldly and immersive designs find mainstream appeal as nature continues to merge with technology, and the line between the real and digital worlds continues to blur.





COLOR PALETTE

The collision of two opposite worlds – the natural and the digital – is reflected in a palette full of contrasts. Swampy darks, such as Nightfall, sit alongside intense brights, like Peridot, and artificial shades, like Vitrail Light.



Rondelle Bead Peridot Glitter | **Cushion Square MAXIMA in Setting** Crystal Vitrail Light | **Chaton Rose MAXIMA** Mesmera AB

Cushion Square MAXIMA Tanzanite | **Rondelle Bead** Fuchsia Glitter | **Rivoli MAXIMA** Violet

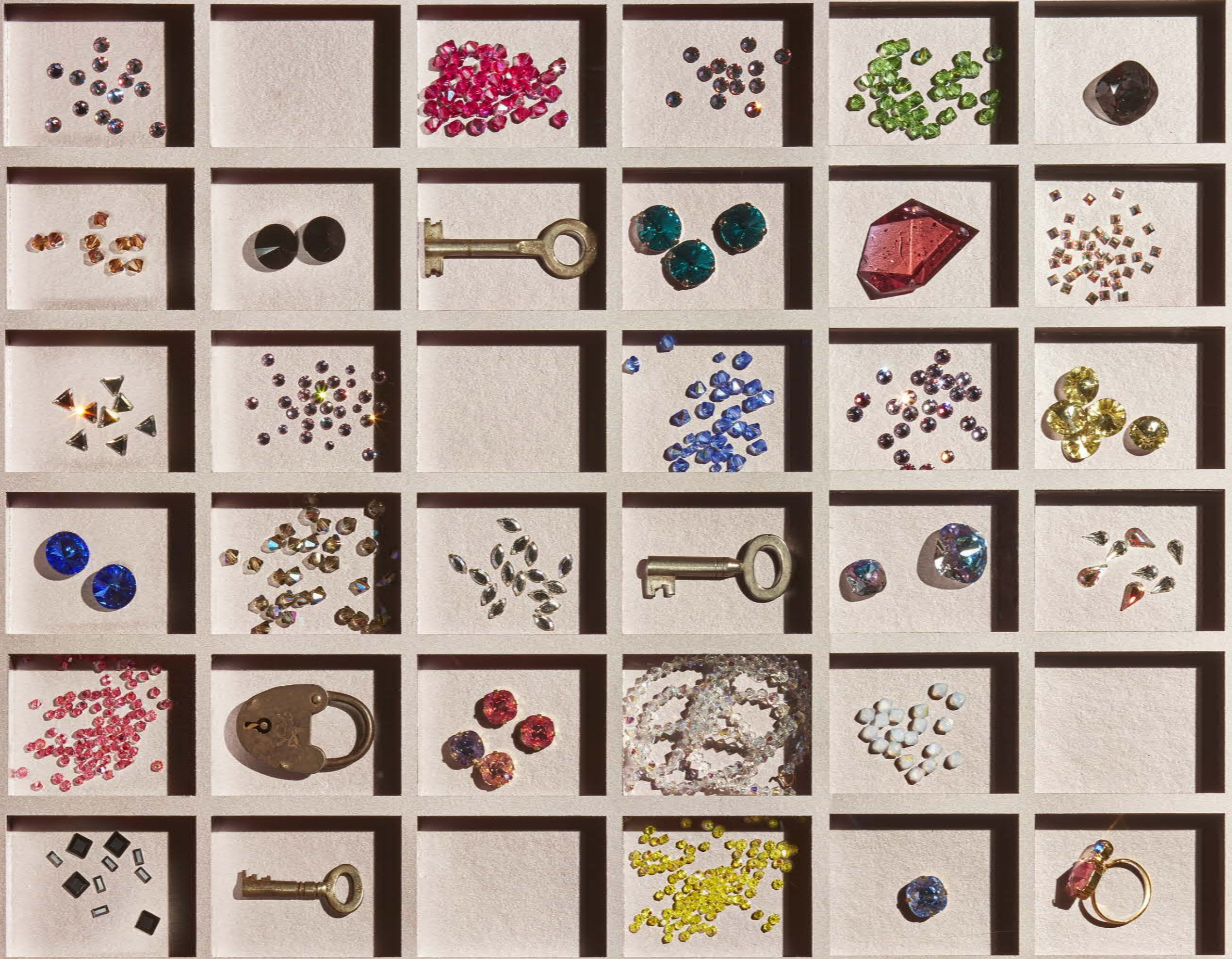
Cushion Square MAXIMA Crystal Nightfall | **Rivoli MAXIMA** Peridot | **Cushion Square MAXIMA in Setting** Rose

Rondelle Bead Light Amethyst Glitter | **Chaton Rose MAXIMA** Mesmera | **Square MAXIMA FB** Crystal AB

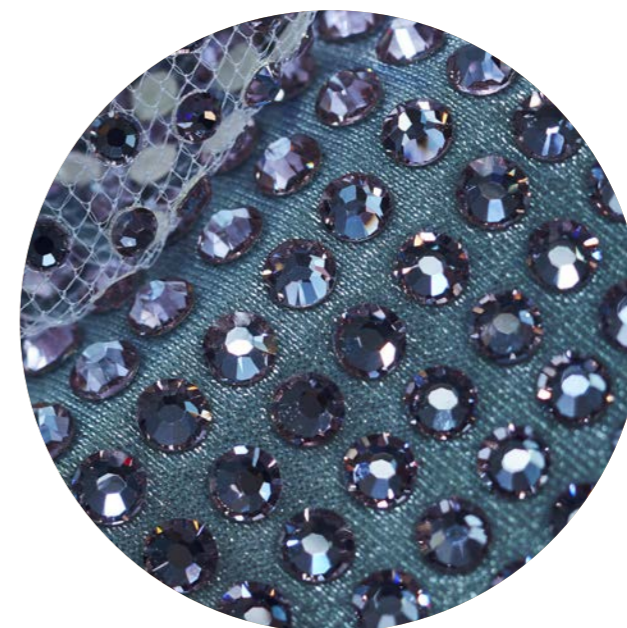


Overse and liquid-like sparkle in bioluminescent hues make for perfect phygital fashion statements.





CRYSTAL INNOVATIONS AW 2023



NEW COLOR
MESMERA

Chaton Roses MAXIMA & Chaton Roses VIVA 12®

No Hotfix and Hotfix
Sizes: ss5-ss34

MESMERA

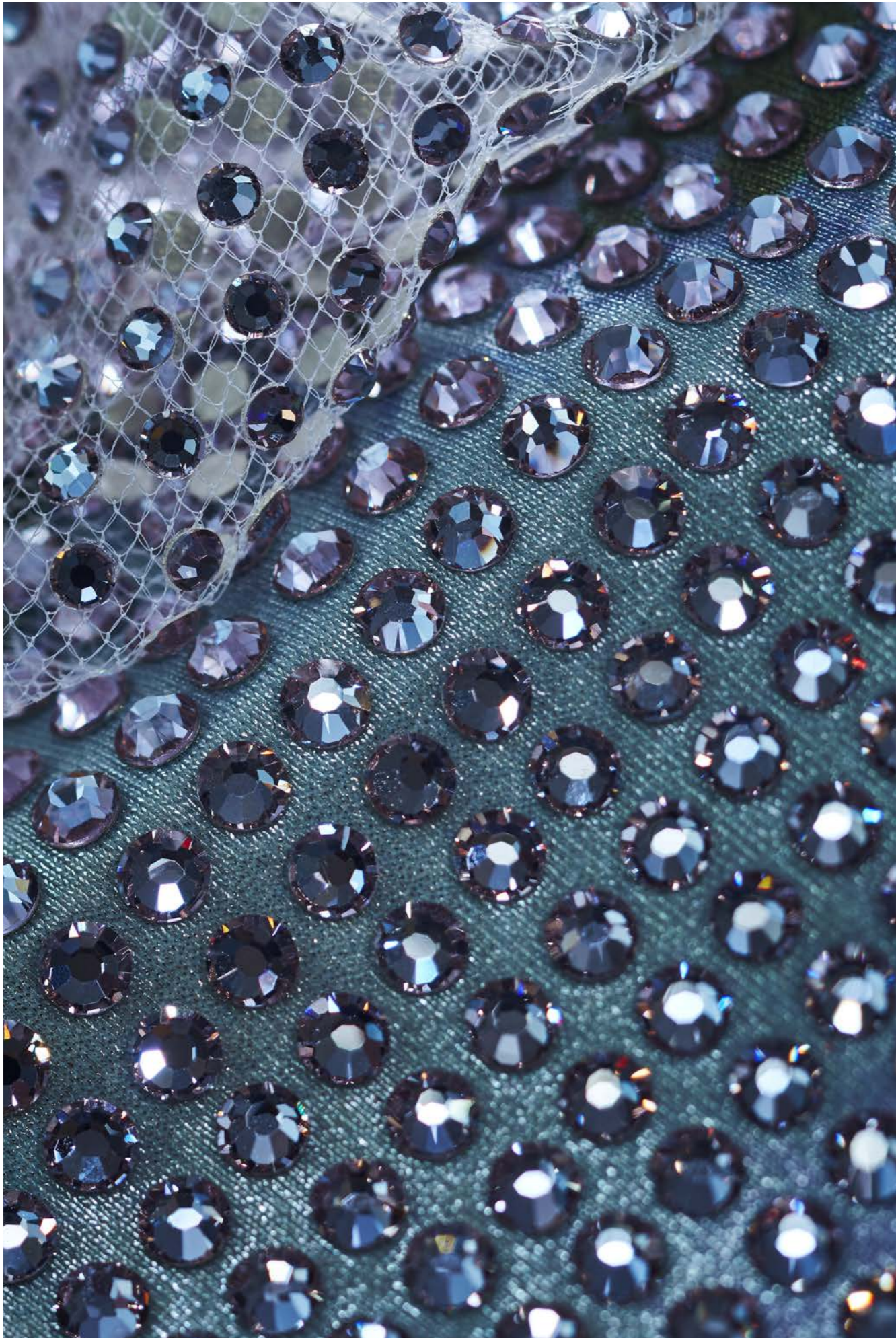
Born from recycled electromagnetic waste and a decades-long friendship between two career chemists, Mesmera is the sublime amalgamation of serendipity and science.

As if by magic, Mesmera flickers from purple to green and back again, bewitching the senses with its characteristic metamerism, meaning it appears to the eye as one color though it comprises a different spectral composition.

This mood ring-like shade was developed over several months with the prestigious Czech Academy of Sciences and contains trace amounts of a rare-earth metal called neodymium, causing the crystals to appear differently under natural and synthetic light wavelengths.







Under natural light



Mesmera



Mesmera AB

Under synthetic light



Mesmera



Mesmera AB

See following page for matrices →

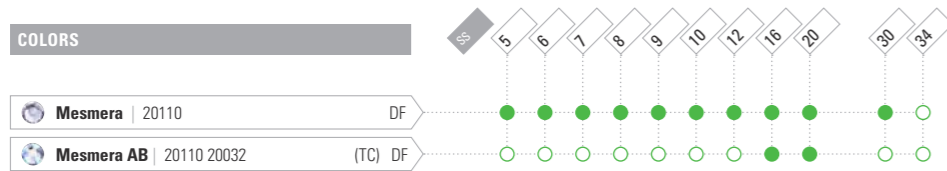
New Color | MESMERA

Chaton Rose MAXIMA

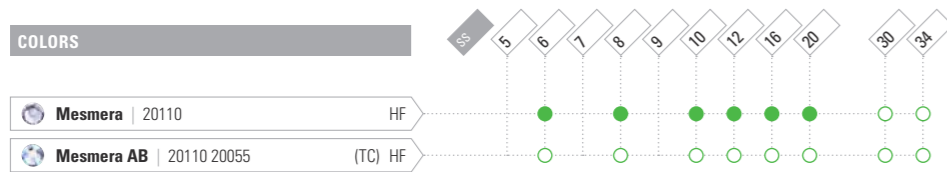
 ART. 438 11 615
SIZE: ss 5, 6, 7, 8, 9, 10, 12, 16, 20

 ART. 438 11 618
SIZE: ss 30, 34

NO HOTFIX



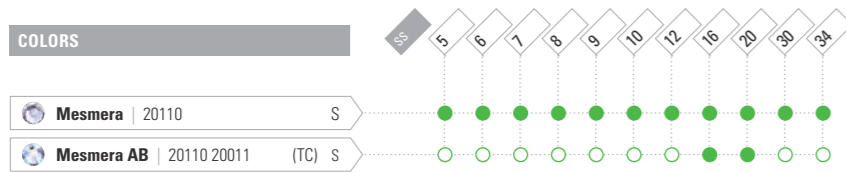
HOTFIX



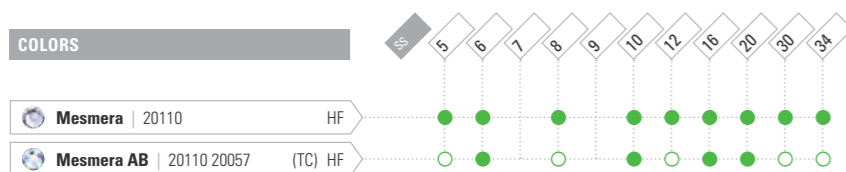
Chaton Rose VIVA 12®

 ART. 438 11 612
SIZE: ss 5, 6, 7, 8, 9, 10, 12, 16, 20, 30, 34

NO HOTFIX

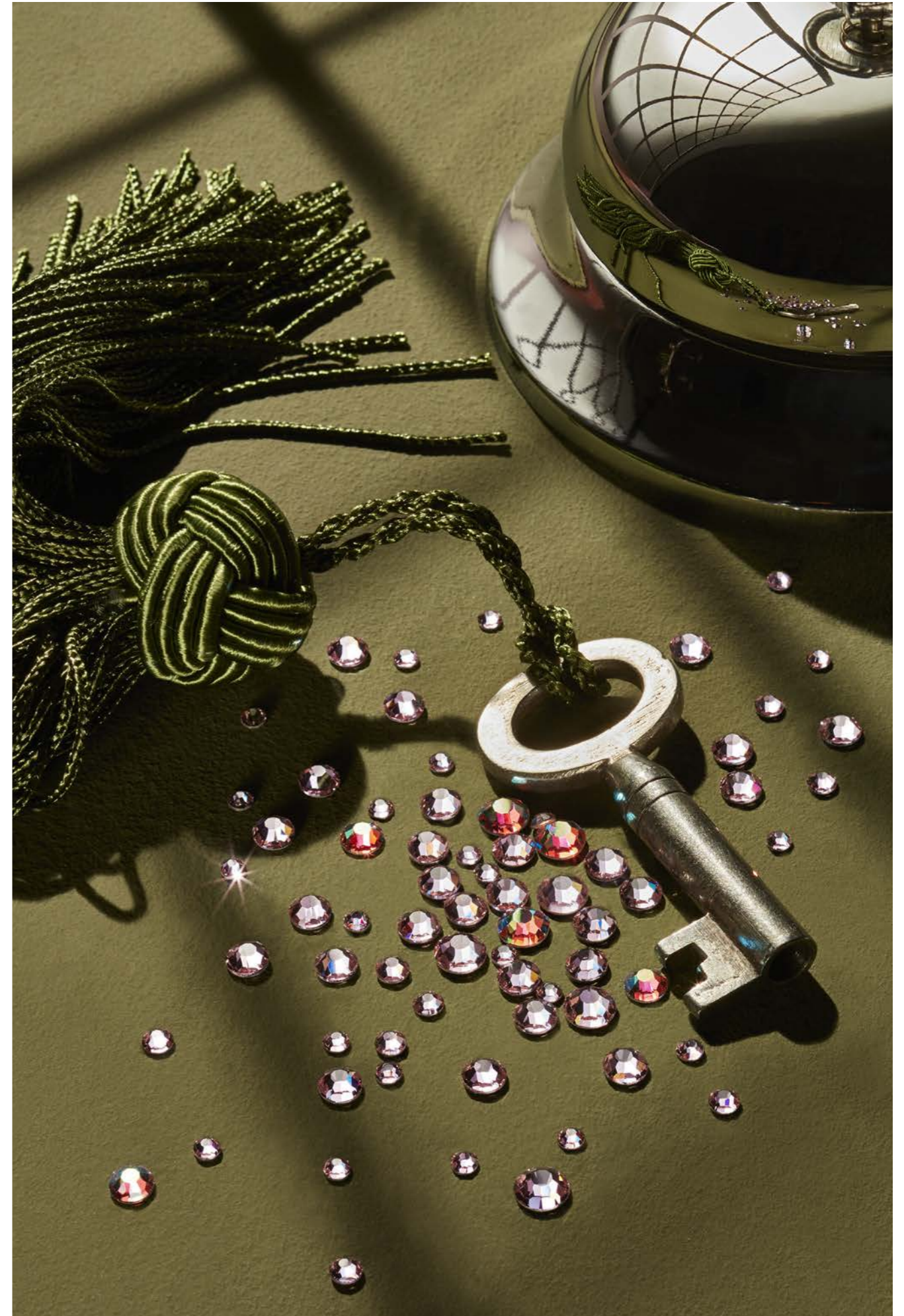


HOTFIX



KEY:

- Standard portfolio item
- Minimum order quantity required
- Innovation
- Innovation, minimum order quantity required





NEW COATING **GLITTER**

Rondelle Beads

Available on select colors

Sizes: All

GLITTER

An icier, more delicate version of our classic Aurora Borealis (AB) coating, Glitter gives merely a subtle wink of iridescence. Available exclusively for select colors of our machine-cut Rondelle Beads, this effervescent new coating dazzles without dominating its underlying color in an exquisite balancing act worthy of any couture catwalk or homemade heirloom.





Crystal
Glitter



Black Diamond
Glitter



Citrine
Glitter



Fuchsia
Glitter



Light Amethyst
Glitter



Light Colorado Topaz
Glitter



Light Siam
Glitter



Peridot
Glitter



Rose
Glitter



Sapphire
Glitter



White Opal
Glitter

See following page for matrix 

Rondelle Bead



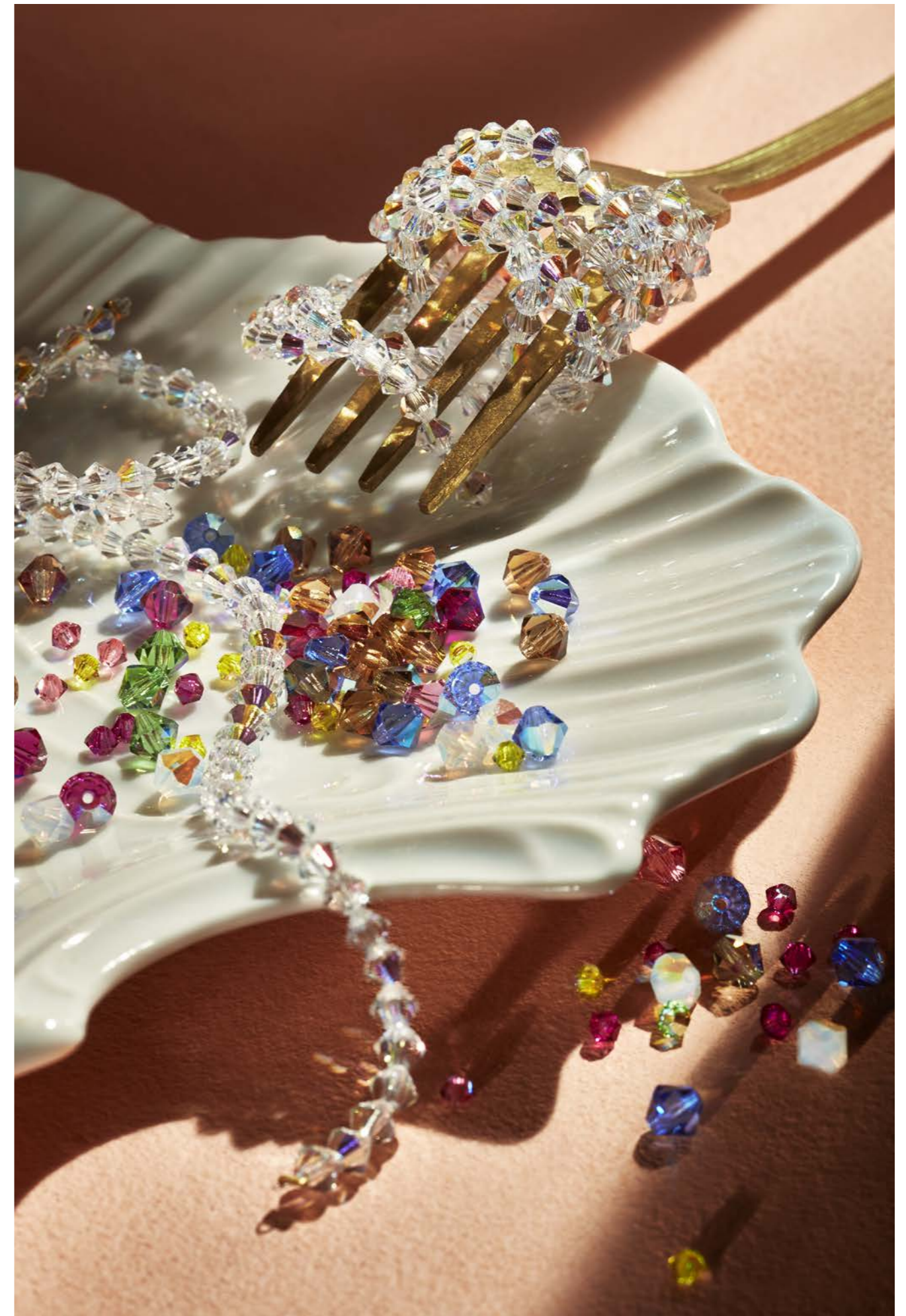
ART. 451 69 302
SIZE: mm 3, 4, 5, 6

HALF COATINGS

	3	4	5	6
Crystal GL 00030 20101 (HC)	●	●	●	●
Black Diamond GL 40010 20101 (HC)	●	●	●	●
Citrine GL 80310 20101 (HC)	●	●	●	●
Fuchsia GL 70350 20101 (HC)	●	●	●	●
Light Amethyst GL 20020 20101 (HC)	●	●	●	●
Light Colorado Topaz GL 10330 20101 (HC)	●	●	●	●
Light Siam GL 90070 20101 (HC)	●	●	●	●
Peridot GL 50520 20101 (HC)	●	●	●	●
Rose GL 70010 20101 (HC)	●	●	●	●
Sapphire GL 30050 20101 (HC)	●	●	●	●
White Opal GL 01000 20101 (HC)	●	●	●	●

KEY:

- Standard portfolio item
- Minimum order quantity required
- Innovation
- Innovation, minimum order quantity required





RANGE EXTENSIONS **COLORS & COATINGS**

Rivoli MAXIMA

Nine additional colors
Sizes: 12mm, 14mm

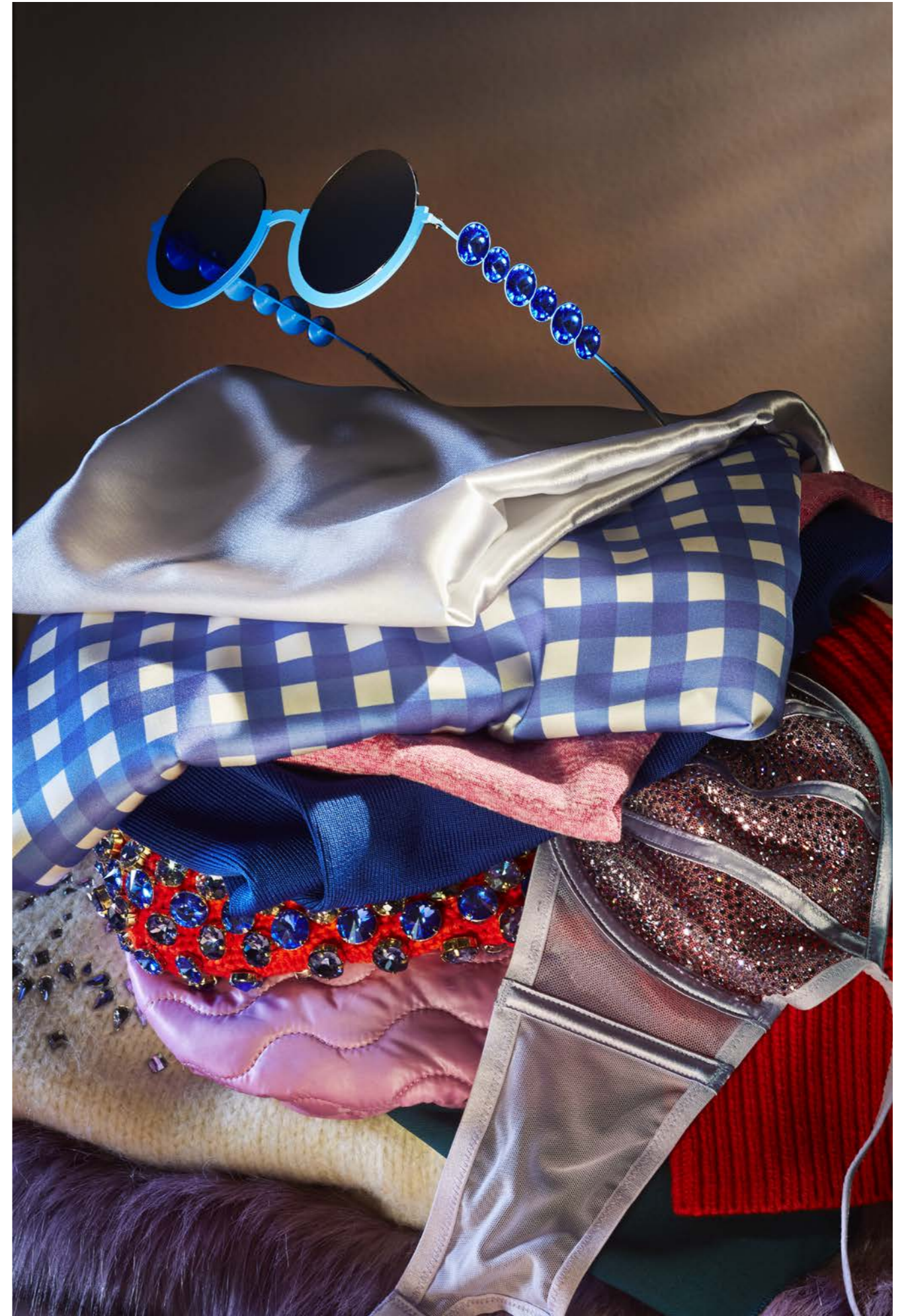
Cushion Square MAXIMA

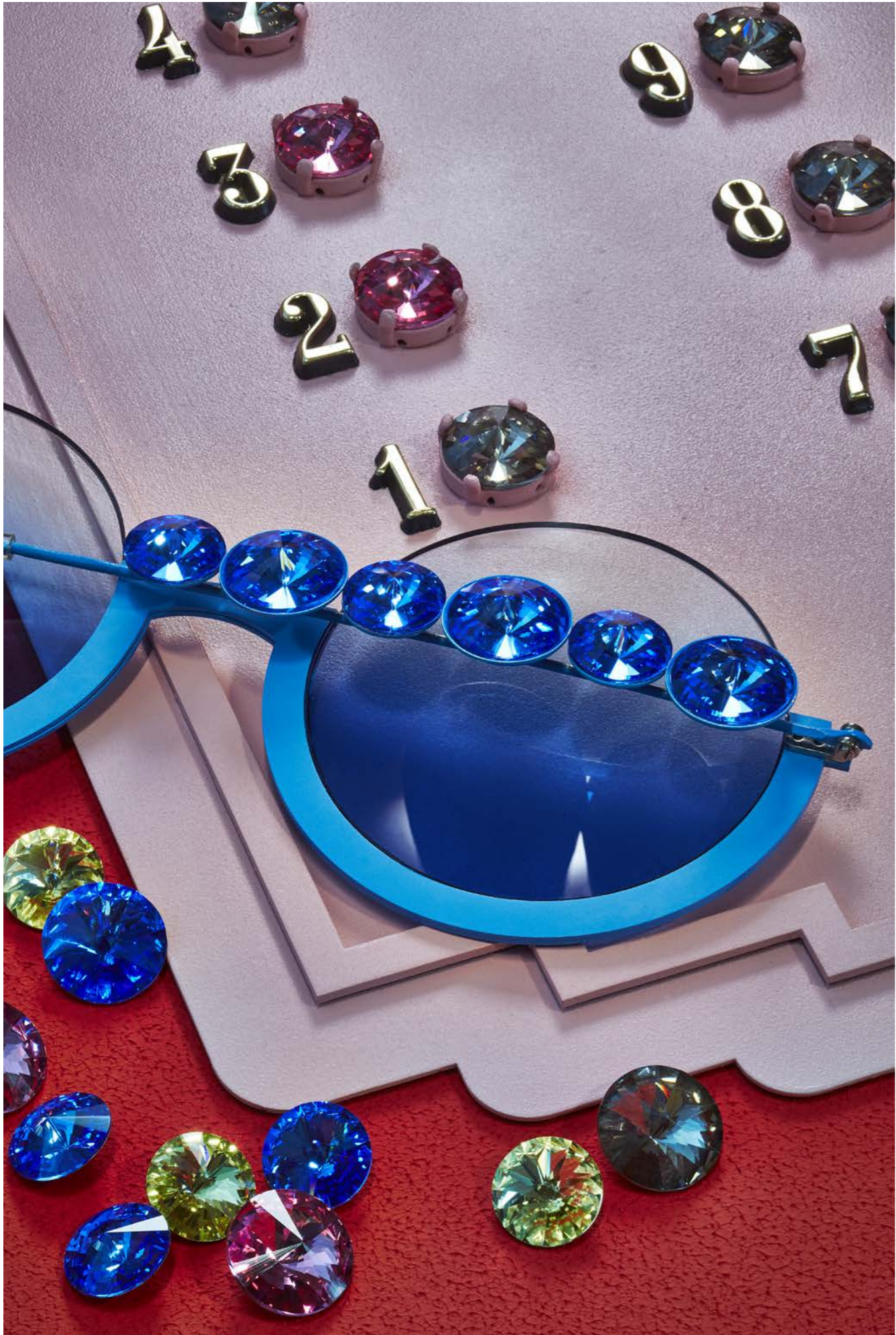
Six additional colors
Sizes: 10 x 10mm, 12 x 12mm

Three additional coatings
Sizes: All

RIVOLI MAXIMA

Previously available only in Crystal, two of the largest sizes of our exquisite Rivoli MAXIMA now come in nine additional colors, including costume-jewelry classics like Jet, Peridot and Sapphire.





Jet



Blue Zircon



Chrysolite



Jonquil



Light Peach



Peridot



Sapphire



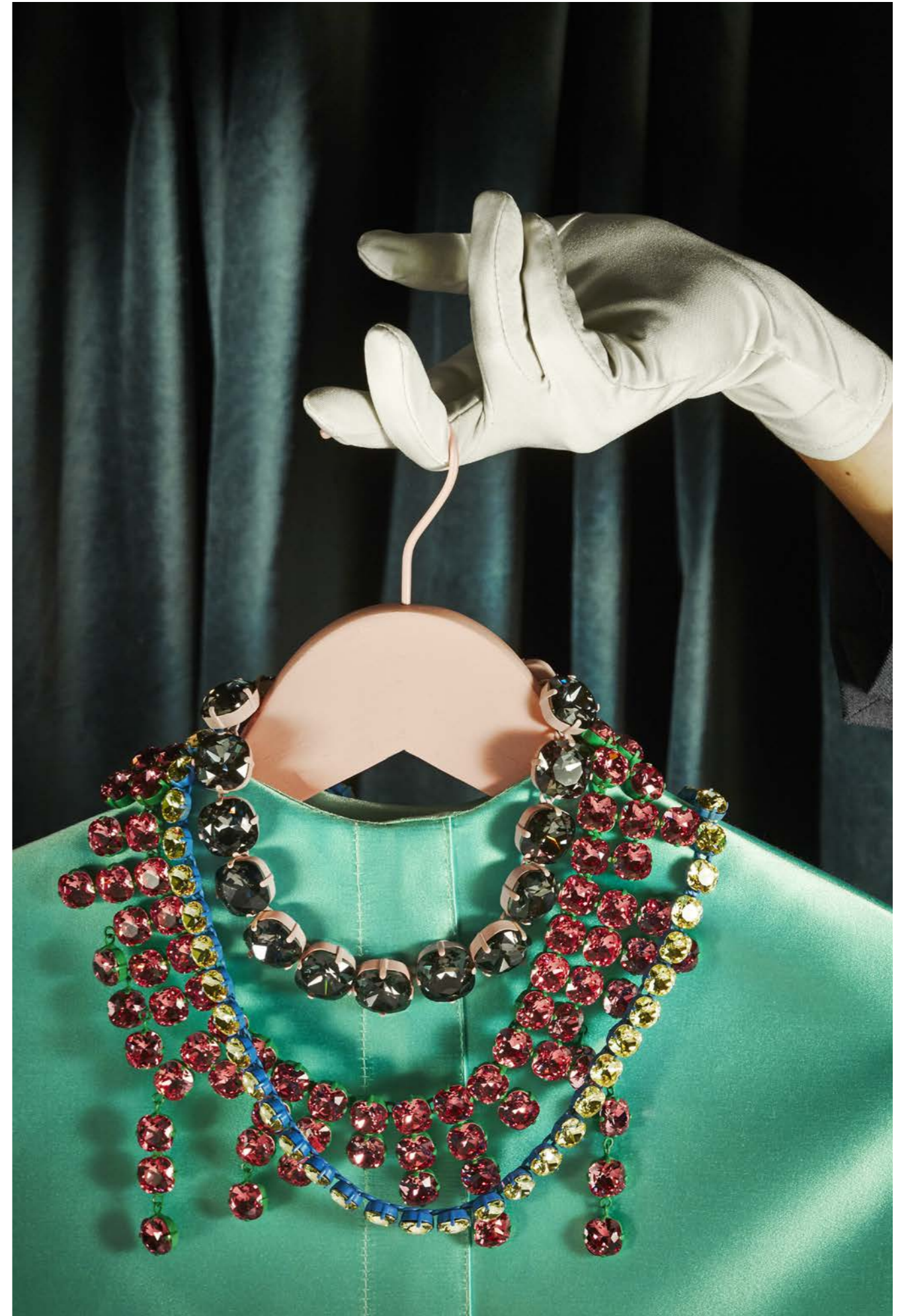
Topaz



Violet

CUSHION SQUARE MAXIMA

Our magnificent Cushion Square MAXIMA now comes in six additional colors in two of its three available sizes, and three additional coatings in all sizes, including its largest, size 18 x 18mm.





Fuchsia



Jonquil



Light Rose



Light Sapphire



Rose



Tanzanite



Crystal Bermuda Blue



Crystal Nightfall

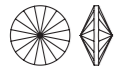


Crystal Vitrail Light

See following page for matrices 

Range Extensions | COLORS & COATINGS

Rivoli MAXIMA



ART. 436 11 177
SIZE: mm 12, 14

COLORS

Color	Code	DF	12	14
Jet	23980	U	●	●
Blue Zircon	60230	DF	●	●
Chrysolite	50000	DF	●	●
Jonquil	80100	DF	●	●
Light Peach	90300	DF	●	●
Peridot	50520	DF	●	●
Sapphire	30050	DF	●	●
Topaz	10070	DF	●	●
Violet	20310	DF	●	●

Cushion Square MAXIMA



ART. 435 36 132
SIZE: mm 10×10, 12×12, 18×18

COLORS

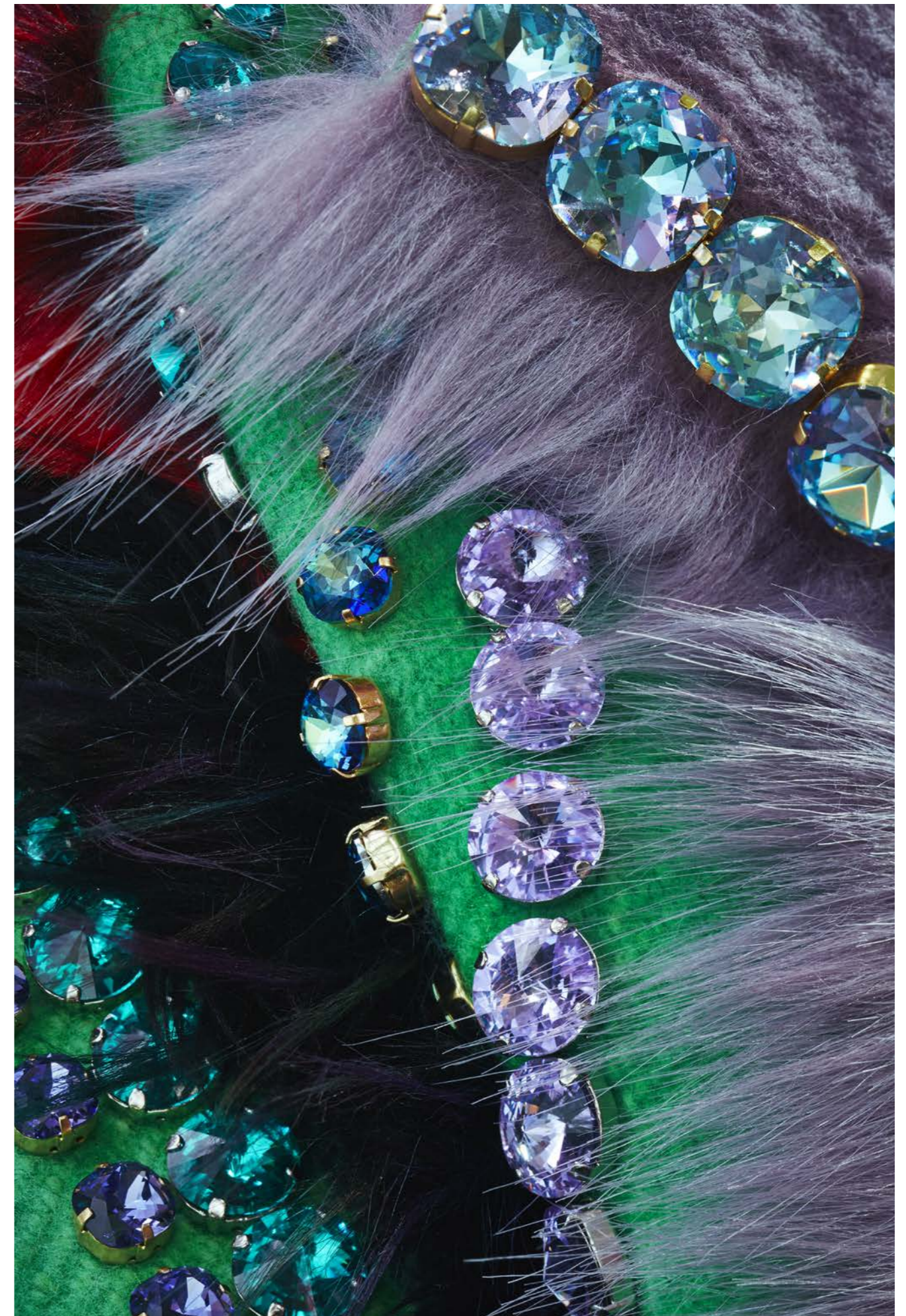
Color	Code	DF	10×10	12×12	18×18
Fuchsia	70350	DF	●	●	●
Jonquil	80100	DF	●	●	●
Light Rose	70020	DF	●	●	●
Light Sapphire	30020	DF	●	●	●
Rose	70010	DF	●	●	●
Tanzanite	20410	DF	●	●	●

COATINGS

Coating	Code	(BC)	A	10×10	12×12	18×18
Crystal BBI	00030 29636	(BC)	A	●	●	●
Crystal Ntf	00030 26036	(BC)	A	●	●	●
Crystal VL	00030 26536	(BC)	A	●	●	●

KEY:

- Standard portfolio item
- Minimum order quantity required
- Innovation
- Innovation, minimum order quantity required





IMPROVED QUALITY **NOW IN MAXIMA**

Rivoli MAXIMA FB* | Baguette MAXIMA FB

Navette MAXIMA FB | Pear MAXIMA FB

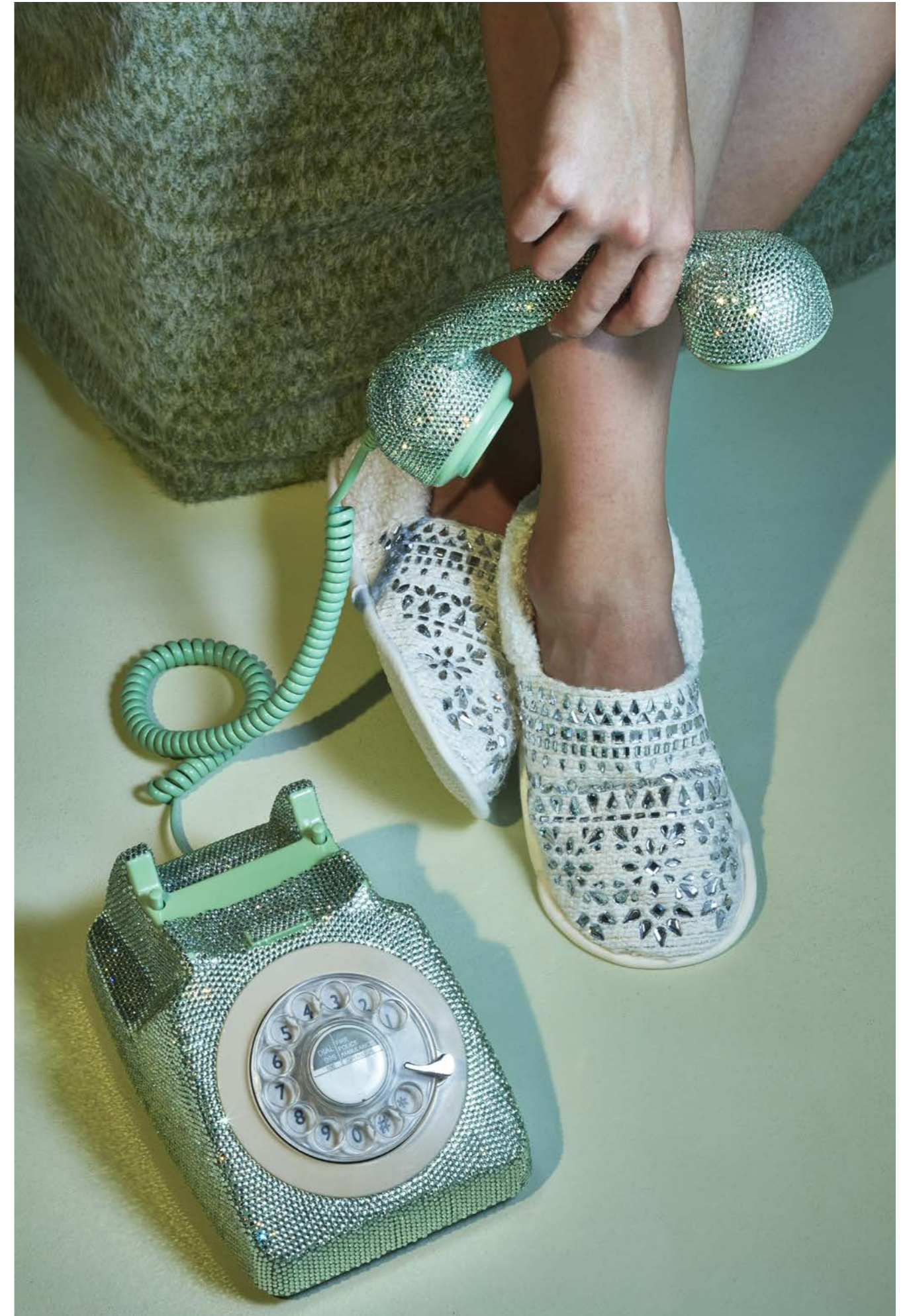
Square MAXIMA FB | Triangle MAXIMA FB

No Hotfix and Hotfix
Sizes: All

* Available only in no-hotfix version

NOW IN MAXIMA

Produced according to Preciosa's highest quality standards, six of our classic flatback shapes will join the rest of our flatbacks portfolio as part of Preciosa's premium quality, lead-free MAXIMA line.





Improved Quality | **NOW IN MAXIMA**



Rivoli MAXIMA FB
Crystal



Baguette MAXIMA FB
Crystal



Navette MAXIMA FB
Crystal



Pear MAXIMA FB
Crystal



Square MAXIMA FB
Crystal

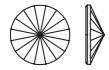


Triangle MAXIMA FB
Crystal

See following page for matrices →

Improved Quality | NOW IN MAXIMA

Rivoli MAXIMA FB



ART. 438 11 301
SIZE: mm 10, 14

NO HOTFIX

COLOR / COATING		mm	10	14
Crystal 00030	DF		●	●
Crystal AB 00030 20031	(TC) DF		●	●

Baguette MAXIMA FB



ART. 438 26 210
SIZE: mm 5 x 2.5

NO HOTFIX

COLORS / COATINGS		mm	5x2.5
Crystal 00030	DF		●
Jet 23980	DF/U		●
Crystal AB 00030 20031	(TC) DF		●
Crystal Aur 00030 26231	(TC) DF		●
Crystal Lab 00030 27031	(TC) DF		○
Jet AB 23980 20031/20001	(TC) DF/U		○
Jet Hem 23980 27231/27201	(TC) DF/U		●

HOTFIX

COLORS / COATINGS		mm	5x2.5
Crystal 00030	HF		●
Jet 23980	HF		●
Crystal AB 00030 20057	(TC) HF		●
Crystal Aur 00030 26257	(TC) HF		●
Crystal Lab 00030 27057	(TC) HF		○
Jet AB 23980 20057	(TC) HF		○
Jet Hem 23980 27257	(TC) HF		●

Navette MAXIMA FB



ART. 438 14 110
SIZE: mm 8 x 4

NO HOTFIX

COLORS / COATINGS		mm	8x4
Crystal 00030	DF		●
Jet 23980	U		●
Crystal AB 00030 20031	(TC) DF		●
Jet Hem 23980 27201	(TC) U		●

HOTFIX

COLORS / COATINGS		mm	8x4
Crystal 00030	HF		●
Jet 23980	HF		●
Crystal AB 00030 20057	(TC) HF		●
Jet Hem 23980 27257	(TC) HF		●

Pear MAXIMA FB



ART. 438 15 110
SIZE: mm 6 x 3.6, 8 x 4.8, 10 x 6

NO HOTFIX

COLORS / COATINGS		mm	6x3.6	8x4.8	10x6
Crystal 00030	DF		●	●	●
Jet 23980	U		●	●	●
Crystal AB 00030 20031	(TC) DF		●	●	●
Jet Hem 23980 27201	(TC) U		●	●	●

HOTFIX

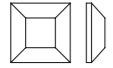
COLORS / COATINGS		mm	6x3.6	8x4.8	10x6
Crystal 00030	HF		●	●	●
Jet 23980	HF		●	●	●
Crystal AB 00030 20057	(TC) HF		●	●	●
Jet Hem 23980 27257	(TC) HF		●	●	●

KEY:

- Standard portfolio item
- Minimum order quantity required
- Innovation
- Innovation, minimum order quantity required

Improved Quality | NOW IN MAXIMA

Square MAXIMA FB



ART. 438 23 210
SIZE: mm 3 × 3, 4 × 4, 6 × 6

NO HOTFIX

COLORS / COATINGS

	mm	3×3	4×4	6×6
Crystal 00030	DF	●	●	●
Jet 23980	DF/U	●	●	●
Crystal AB 00030 20031	(TC) DF	●	●	●
Crystal Hon 00030 23531	(TC) DF	●	●	●
Crystal Lab 00030 27031	(TC) DF	○	○	○
Crystal MtC 00030 27731	(TC) DF	○	○	○
Jet AB 23980 20031/20001	(TC) DF/U	○	○	○
Jet Hem 23980 27231/27201	(TC) DF/U	●	●	●

HOTFIX

COLORS / COATINGS

	mm	3×3	4×4	6×6
Crystal 00030	HF	●	●	●
Jet 23980	HF	●	●	●
Crystal AB 00030 20057	(TC) HF	●	●	●
Crystal Aur 00030 26257	(TC) HF	●	●	●
Crystal Hon 00030 23557	(TC) HF	●	●	●
Crystal Lab 00030 27057	(TC) HF	○	○	○
Crystal MtC 00030 27757	(TC) HF	○	○	○
Jet AB 23980 20057	(TC) HF	○	○	○
Jet Hem 23980 27257	(TC) HF	●	●	●

Triangle MAXIMA FB



ART. 438 21 210
SIZE: mm 6

NO HOTFIX

COLOR / COATING

	mm	6
Crystal 00030	DF	●
Crystal AB 00030 20031	(TC) DF	●

HOTFIX

COLOR / COATINGS

	mm	6
Crystal 00030	HF	●
Crystal AB 00030 20057	(TC) HF	●
Crystal Hon 00030 23557	(TC) HF	●
Crystal Lab 00030 27057	(TC) HF	●

KEY:

- Standard portfolio item
- Minimum order quantity required
- Innovation
- Innovation, minimum order quantity required



Bohemian *crafted* since 1548

